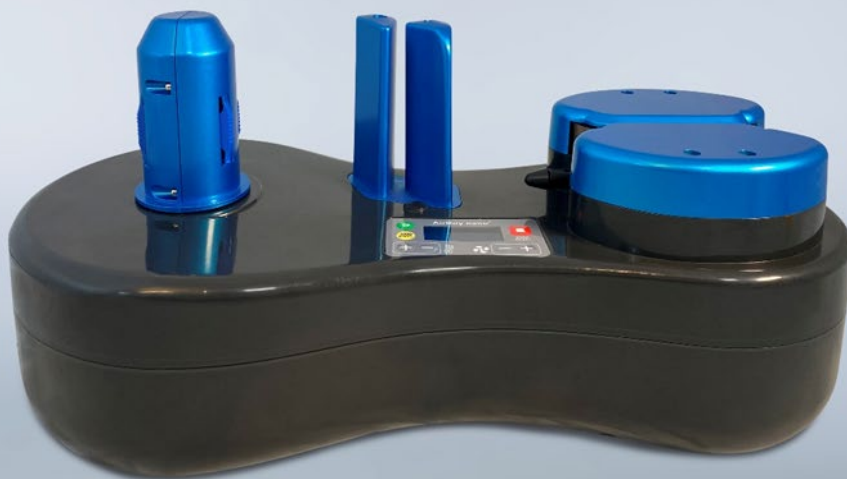


# AIRBOY®

## nano4 - Settings



## Recommended Settings for AirBoy nano4

<b>Standard 20µm / ClimaFilm-50</b>			
	<b>Speed</b>	<b>Temperature %</b>	<b>Air %</b>
9.7.1	V4	120-130	06-08
9.8.3	V4	120-130	32-34
<b>AirWave Bio</b>			
	<b>Speed</b>	<b>Temperature %</b>	<b>Air %</b>
9.7.1	V4	80-90	03-05
9.8.3	V4	80-90	20-22
<b>AirWave PaperWave Bio</b>			
	<b>Speed</b>	<b>Temperature %</b>	<b>Air %</b>
9.7.1	V4	120-130	08-10
9.8.3	V4	120-130	30-32
<b>AirWave Clima-100 (20µm)</b>			
	<b>Speed</b>	<b>Temperature %</b>	<b>Air %</b>
9.7.1	V4	95-100	04-06
9.8.3	V4	95-100	25-30
<b>AirWave Clima-100 (25µm)</b>			
	<b>Speed</b>	<b>Temperature %</b>	<b>Air %</b>
9.7.1	V4	100-110	06-08
9.8.3	V4	100-110	32-34
<b>AirWave Clima-100 (35µm)</b>			
	<b>Speed</b>	<b>Temperature %</b>	<b>Air %</b>
9.7.1	V4	95-105	06-08
9.8.3	V4	95-105	32-34

**from Serial-No. > N4 120250XXX please use the following:**

<b>Standard 20µm / ClimaFilm-50</b>			
	<b>Speed</b>	<b>Temperature %</b>	<b>Air %</b>
9.7.1	V4	65-75	13-15
9.8.3	V4	65-70	75-80

<b>AirWave Bio</b>			
	<b>Speed</b>	<b>Temperature %</b>	<b>Air %</b>
9.7.1	V4	35-38	13-15
9.8.3	V4	35-38	70-75
<b>AirWave PaperWave Bio</b>			
	<b>Speed</b>	<b>Temperature %</b>	<b>Air %</b>
9.7.1	V4	75-80	25-30
9.8.3	V4	75-80	80-90
<b>AirWave ClimaFilm-100 (20µm)</b>			
	<b>Speed</b>	<b>Temperature %</b>	<b>Air %</b>
9.7.1	V4	35-40	10-15
9.8.3	V4	35-40	55-60
<b>AirWave Clima-100 (25µm)</b>			
	<b>Speed</b>	<b>Temperature %</b>	<b>Air %</b>
9.7.1	V4	50-55	10-15
9.8.3	V4	50-55	55-60
<b>AirWave Clima-100 (35µm)</b>			
	<b>Speed</b>	<b>Temperature %</b>	<b>Air %</b>
9.7.1	V4	60-65	10-15
9.8.3	V4	60-65	55-60

The listed settings are recommendations to ensure a longer life of the machine by still good cushion results. Do not exceed these settings. But temperature and air volume can differ a little bit depending on field of application and environmental conditions.